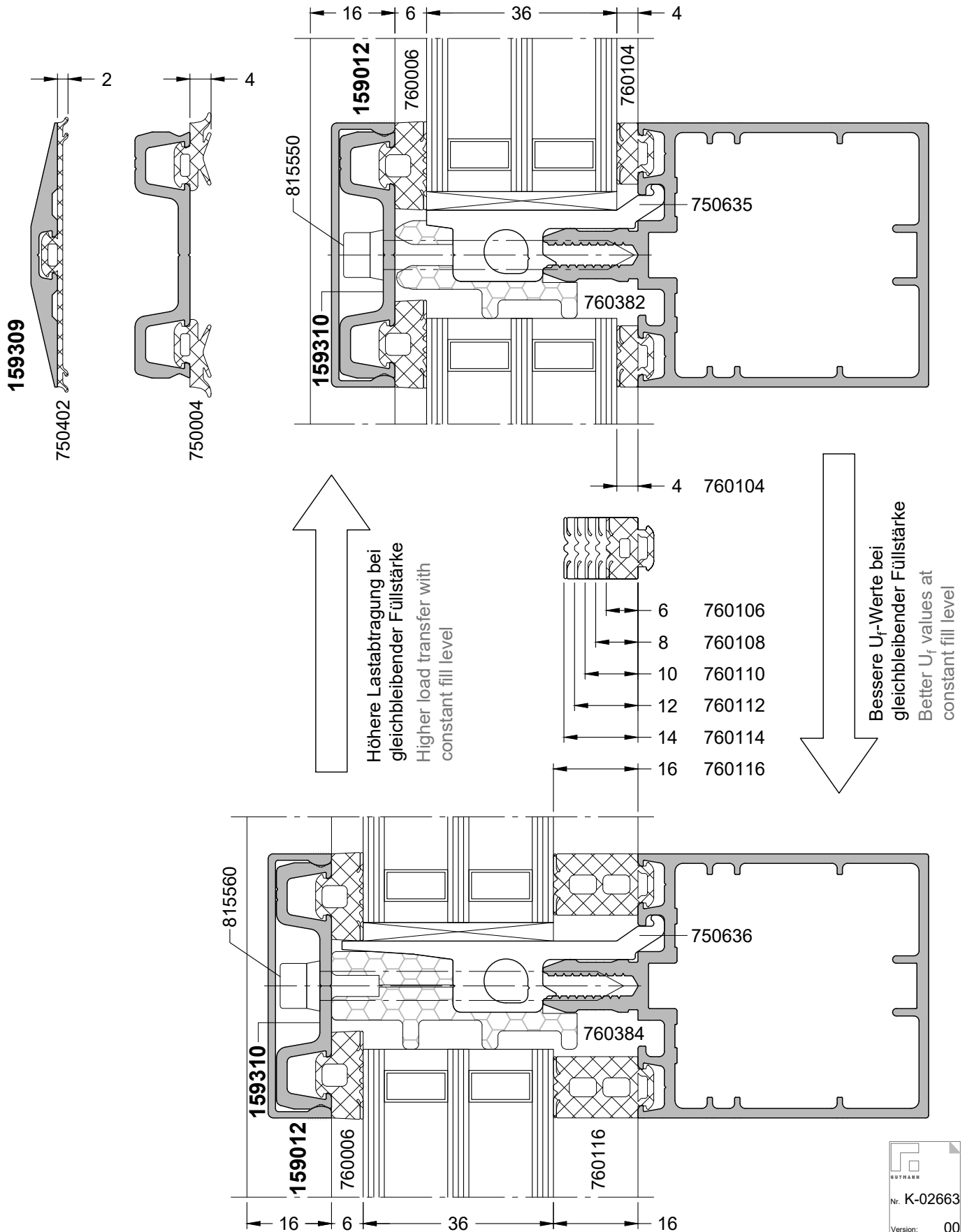


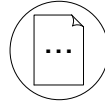
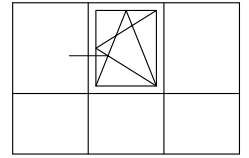
K-Nr.	Serie Series	Beschreibung	Description	Seite Page
K-02660	GCW 050, GCW 060	Dreh/Kipp Flügel, als Einsetzelement in GCW 050 / 060	Turn/tilt sash, as insert element in GCW 050 / 060	3
K-02661	GCW 050, GCW 060	Holz-Alu Fenster, als Einsetzelement in GCW 050 / 060	Wood-aluminium window, as insert element in GCW 050 / 060	4
K-02662	GCW 050, GCW 060	Tür als Einsetzelement in GCW 050 / 060	Door as insert element in GCW 050 / 060	5
K-02663	GCW 050, GCW 060	Varianten der inneren Verglasungsdichtung der GCW 050 / 060	Variants of the internal glazing gasket of the GCW 050 / 060	2

Varianten der inneren Verglasungsdichtung der GCW 050 / 060

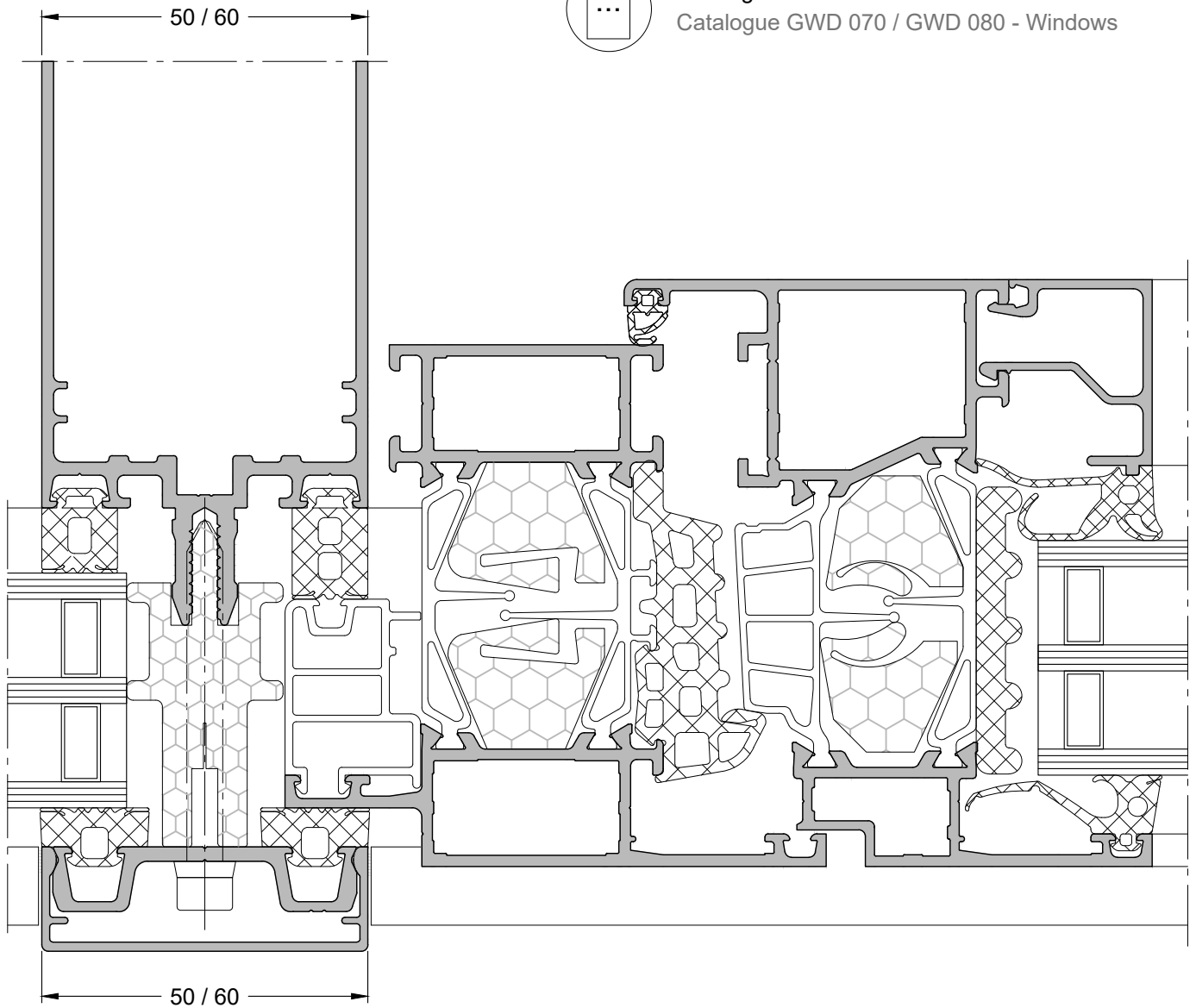
Variants of the internal glazing gasket of the GCW 050 / 060



Dreh/Kipp Flügel, als Einselelement in GCW 050 / 060
Turn/tilt sash, as insert element in GCW 050 / 060

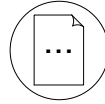
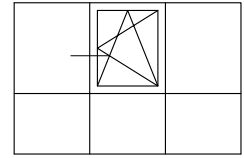


Katalog GWD 070 / GWD 080 - Fenster
Catalogue GWD 070 / GWD 080 - Windows

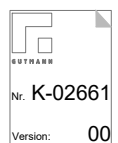
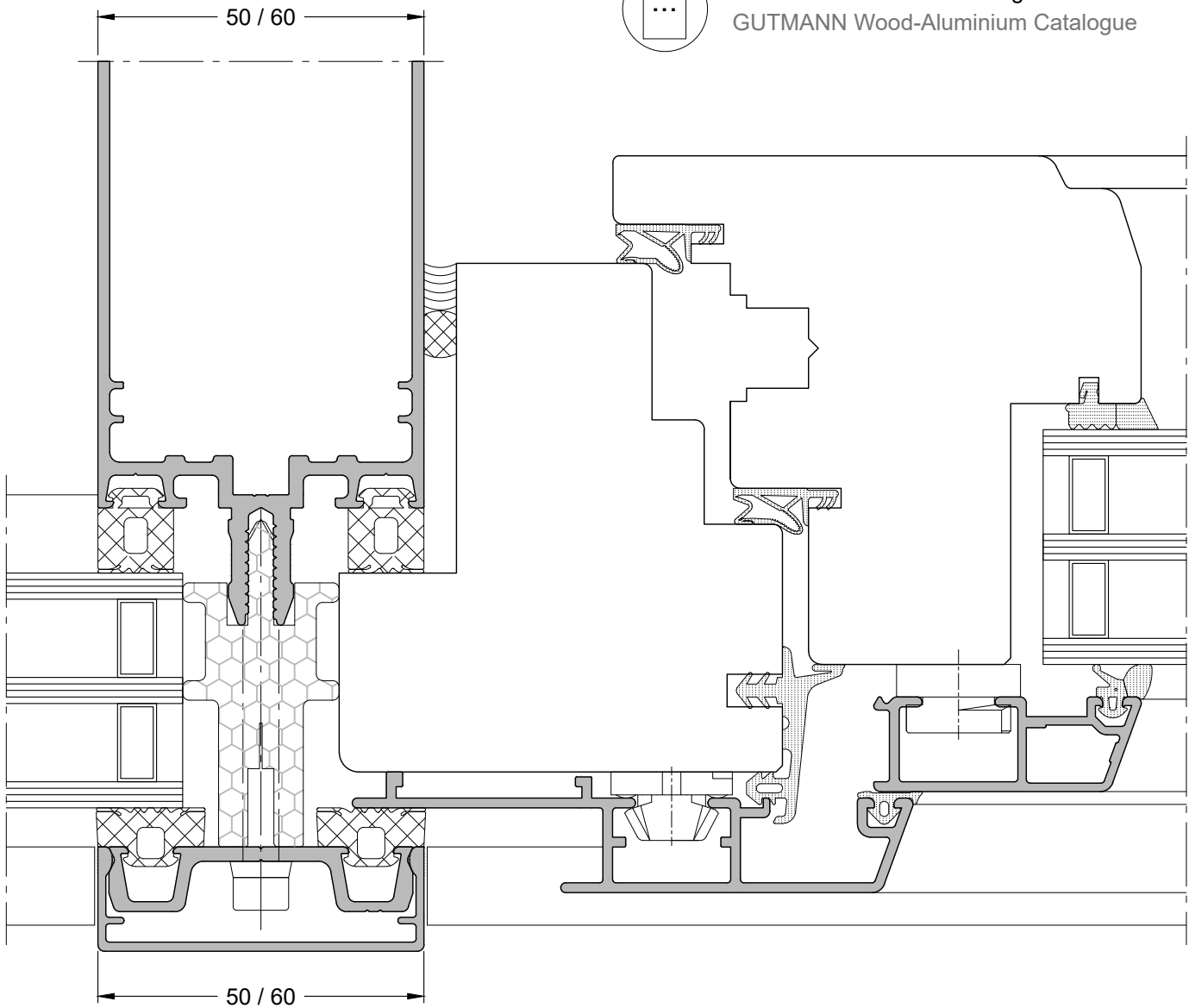


Holz-Alu Fenster, als Einsetzelement in GCW 050 / 060

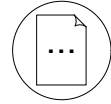
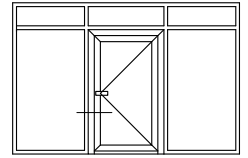
Wood-aluminium window, as insert element in
GCW 050 / 060



GUTMANN Holz-Alu Katalog
GUTMANN Wood-Aluminium Catalogue



Tür als Einselelement in GCW 050 / 060
Door as insert element in GCW 050 / 060



Katalog GWD 070 / GWD 080 - Tür
Catalogue GWD 070 / GWD 080 - Door

